

RAIL SITE PROPERTIES

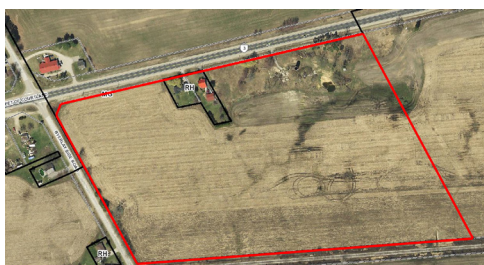
CURRENT LISTINGS



Elgin Innovation Centre (EIC), Aylmer, Ontario

The Elgin Innovation Centre is centrally located within the Town of Aylmer's industrial park and sits on fifty-five acres of land with one million square feet of office, warehouse, and industrial space. The EIC offers flexible growth for businesses, with affordable rates starting at \$3.00 per square foot net and access to 500,000 people, including the City of London, within a thirty minute radius. Rail access via the Canadian National (CN) rail corridor is possible along with a number of space and land configurations.

[SEE AVAILABLE SPACES](#)



880 Byerlay Side Road, Courtland, Ontario

27 acre rail site with the potential to expand the zoning to enable a full 62 acre rail site.

ZONING: General Industrial Zone

CURRENT USE: Occupied

[EMAIL FOR MORE INFORMATION:](#) mikek@titantrailers.com



1101 Hwy 3, Tillsonburg, Ontario

153 acres with 76 acres of developable lands, centrally located in a high profile location directly on Provincial Highway 3. This location offers proximity to Canada's largest market as well as Northeast and Midwest markets in the US.

ZONING: Vacant Industrial Land

CURRENT USE: Vacant

[EMAIL FOR MORE INFORMATION:](#) cpanschow@tillsonburg.ca