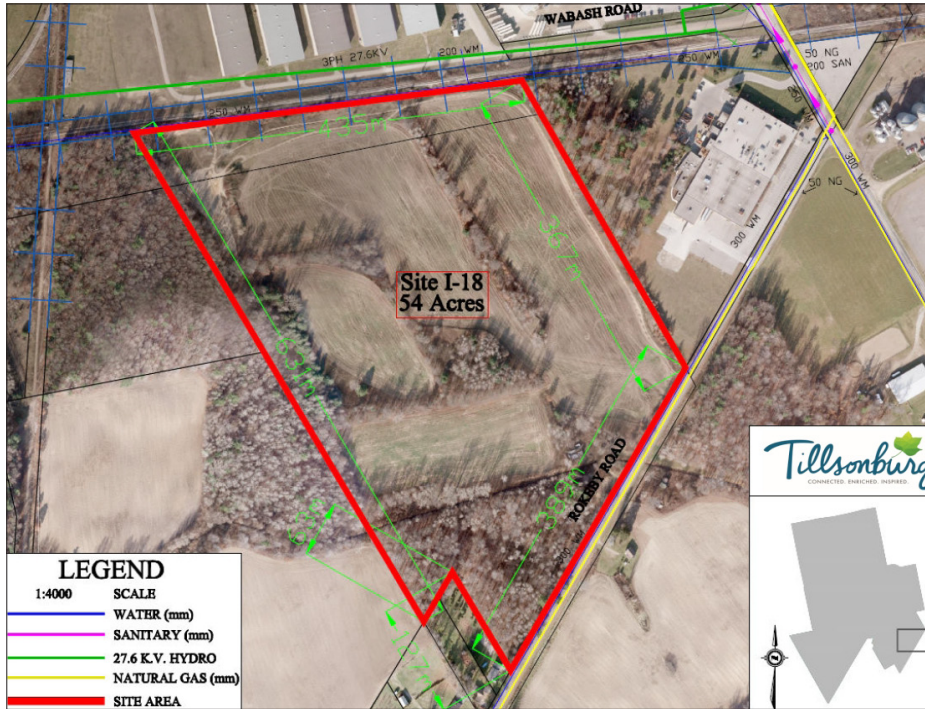


### ROKEBY ROAD, TILLSONBURG, ON



#### ZONING:

General Industrial (MG)

#### LEGAL DESCRIPTION:

Lot 1641, Plan 500 and  
Mid Con 4, NTR, Pt Lot 10;  
Parts 1 & 2, Plan 41R-8386

#### CURRENT USE:

Vacant land

#### ACREAGE:

54 Acres, with approximately  
40 acres developable

#### MUNICIPAL SERVICES:

Water, hydro, gas. Sanitary sewer  
is in close proximity

#### RAIL ACCESS:

Yes, connections to both CN  
and CP are provided by Ontario  
Southland Railway

**Price: \$25,000/acre**

For more information contact:

**CEPHAS PANSCHOW**, Ec.D., *Development Commissioner*

cpanschow@tillsonburg.ca

T. 519.688.3009, ext. 3250