

# TILLSONBURG CONNECTS



SUMMER 2009

## NEWS BRIEFS

### Primary Packaging

An Ohio based manufacturer of heavy duty polyethylene film and bags is considering an expansion into the Canadian market and is soliciting proposals from manufacturers, brokers, and/or agents interested in representing them. For more information, please contact Bill Habeck, Vice-President Sales & Marketing, at (800) 774-2247, Ext. 23 or visit their website at [www.primarypackaging.com](http://www.primarypackaging.com).

### Opportunity Alert

Opportunity Alert is an electronic sourcing tool designed to assist companies in Ontario to:

- Seek strategic partnerships and/or alliances with other Ontario companies; and,
- Seek Ontario-based suppliers.

Opportunity Alert taps into the "Networking Power" of the Ontario Government's Business Advisors across the Province. For more information or to register, please email them at [opportunity.alert@ontario.ca](mailto:opportunity.alert@ontario.ca).

For more information contact:

Cephas Panschow, Ec.D.  
Development Commissioner  
[cpanschow@tillsonburg.ca](mailto:cpanschow@tillsonburg.ca)

T: 519.842.6428 , Ext. 3250  
F: 519.842.9431

### Town of Tillsonburg

200 Broadway, 2nd Floor  
Tillsonburg, ON N4G 5A7



[www.tillsonburg.ca](http://www.tillsonburg.ca)

## Town Advisory Committee provides public/private sector collaboration opportunities

Did you know that the Town of Tillsonburg has an Economic Development Advisory Committee (EDAC) whose job it is to provide guidance to Town Council on economic development matters? If not, you are likely in the majority as the Committee does not have a high profile with the general public. The purpose of this article is to raise the awareness of the Committee by informing the general public about the committee and its members. In this regard, we will be highlighting specific members of the Committee over the next few editions of the newsletter starting with the Chair, Marty Klein.

Before we do this, it is important to provide a brief overview of the role and specific responsibilities of the Committee. EDAC's mandate is to facilitate the continued development and growth of Tillsonburg. They do this by offering input and guidance on the needs of business and industry, ensuring information on development opportunities and industrial land are available and up-to-date, assisting in the preparation of promotional materials and ensuring that the website is current, providing guidance on

investment attraction initiatives, ensuring that the Town remains competitive in attracting new business & industry, etc. In addition to this, the Committee is also responsible for overseeing and monitoring the implementation of the recently approved Economic Development Strategy.

The role of the chair is important as it is necessary to ensure that the meetings are kept on schedule and that the required items are addressed. The Chair also takes a more active role in some of the operations of the Economic Development Department in order to ensure that the Committee's action items are addressed. The Committee is fortunate to have the current chair in place for some years and Marty brings a strong commitment and passion for the Town to his role. The following is a summary of his skills and experience.

Marty is a long standing member of the Tillsonburg community and he was the Vice-President of the Tillsonburg District Memorial Hospital prior to his retirement in 2004 after 35 years working in the

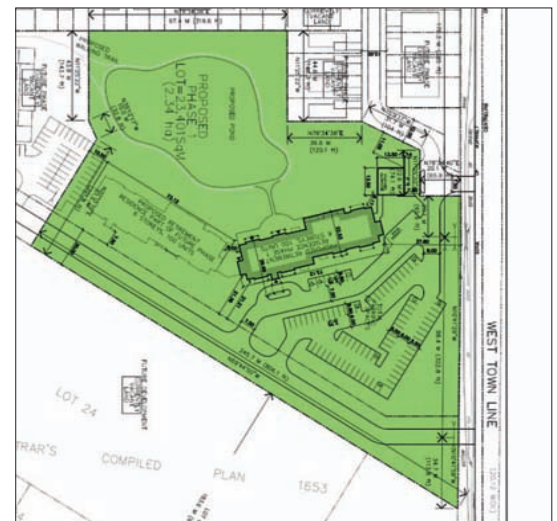
CONTINUED ON PAGE 4, SEE **TOWN ADVISORY COMMITTEE**

## New Retirement Home Approved for Tillsonburg

The Town of Tillsonburg is pleased to announce that Council approved the zoning for a new, 100 unit seniors apartment building on July 13, 2009 following approval of the Official Plan Amendment by the County of Oxford earlier in the month. The development is part of a proposed multi-phase adult lifestyle community on a 36 acre property located in the Town's East end and bounded by vacant land/Simcoe St to the south, West Town Line to the East and Potters Rd to the North.

The proposed development has seven phases; including a future second 100 unit apartment building, a small condominium building, semi-detached and detached residences. The development will include a wide variety of amenities and services for their residents.

CONTINUED ON PAGE 3, SEE **NEW RETIREMENT HOME**



# Airplane Charters now available at Tillsonburg Municipal Airport

Ever need to fly somewhere for a quick business meeting and find that it was nearly impossible and very costly to do so, especially on short notice? If so, then you will be interested to hear that BravoZulu Aviation is now offering charter flights out of the Tillsonburg Municipal Airport.

BravoZulu is a private aircraft charter company that operates out of the Brantford Municipal Airport but offers convenient and cost effective service from airports throughout Southwestern Ontario, including Tillsonburg. By using this service, customers can avoid commuting long distances to major airports, minimize wait times and enjoy ultimate flexibility and efficiency by flying to an airport that is as close as possible to the final destination. In addition to this, since the plane has been chartered, it can be used for private meetings or preparation.

BravoZulu offers service through either a twin engine Cessna 421 C with a two person crew or a twin engine Piper Seneca for smaller groups. The Cessna can accommodate up to 5 passengers, while the Piper can accommodate up to 3 passengers. Both planes have been designed with the passenger's personal comfort in mind and offer leather seats, fold away tables, etc.

In addition to business charters, BravoZulu's services can also be of interest for leisure purposes (overnight to New York City for a game, shopping or a show) and for cargo (door to door pick-up and delivery) with a flight to the Big Apple, Boston or Philadelphia taking approximately two hours.

And surprisingly, flying by charter can also be more cost-effective. For example,



Cessna 421

booking a "direct" airline flight 7 days in advance on a popular travel website from Toronto to Pittsburgh costs \$1130 per person. But if you were to charter with BravoZulu Aviation on the Cessna 421, the same flight would cost approximately \$680 per person (if there are 4 passengers traveling) or \$780 per person in the Piper Seneca if there were only 2 passengers traveling.

Either way you save time and money. You also get to fly from an airport that is more convenient to you and choose when to leave and when to return.

BravoZulu's aircraft are operated by experienced and commercially trained pilots. For more information, please visit their website at: [www.bravozuluaviation.com](http://www.bravozuluaviation.com).

**About the Tillsonburg Municipal Airport** – It is a town-owned, general aviation facility located just south of Highway 401, Ontario's Industry Corridor, that services a variety of private, government, commercial, and corporate aircraft. The airport offers Oxford County's only paved airstrip, a 4,002 foot runway, and two 2,600 foot turf runways. The airport offers attractive land lease rates for hangar development and the lowest fuel prices in Southwestern Ontario. It is currently attracting increased levels of investment including the recent addition of five new hangars with two more planned for 2009. In addition to this, two flying schools/businesses are anticipated to start up in the near future.

## Tillsonburg's Automotive Sector Expands

Martinrea International Inc has leased 70,000 square feet of space in the Town of Tillsonburg in order to meet production requirements related to new business that they have acquired. The company currently has two production lines in Tillsonburg. They are operating with one shift with another shift scheduled to be added at the end of July when they start shipping parts.

"The Town of Tillsonburg, E&E McLaughlin and various suppliers were able to meet our tight timelines" says Kevin Johnson, Vice

President - Metallic Assembly, "and we are appreciative of the support we have received, which has enabled us to meet our production deadlines."

Martinrea is a Tier 1 automotive parts manufacturing company whose customers include the domestic three, CAMI, foreign automakers and parts suppliers such as Magna and TRW. The company is a global leader in the production of quality metal parts, assemblies and modules, and fluid management systems for a variety of sectors.

"We welcome Martinrea to Tillsonburg" says Mayor Stephen Molnar, "we believe that our Town offers a wide variety of competitive advantages for manufacturers, both large and small, and that they will find that there is no better place to do business". "We look forward to supporting them as they establish themselves in our community."

# Tillsonburg Recognized for Commitment to Safety

The Town of Tillsonburg has been recognized by the Electrical & Utilities Safety Association for its achievement in working towards zero workplace injuries and has received the “Commitment” level plaque in recognition of its efforts. Tillsonburg is the first municipality in Ontario to achieve this award.

“Receiving this award demonstrates our commitment to a sustainable health and

sustainable health and safety systems using ZeroQuest as a framework. While each firm is unique, ZeroQuest® is designed to ensure that any company’s health and safety system has the components necessary to succeed.

ZeroQuest is comprised of four levels, which include; Commitment, Effort, Outcomes, and Sustainability. Each level builds upon the previous one. The goal of ZeroQuest is to guide participants through



The Town of Tillsonburg celebrated its achievement at its annual Health & Safety BBQ

safety system in our workplace” says David Morris, Chief Administrative Officer, “I am proud of what we have accomplished and the efforts of our Joint Health & Safety Committee as well as the buy-in that we have received from our staff.”

In 2000, The Electrical & Utilities Safety Association (E&USA) adopted a vision of zero lost-time injuries and illnesses by 2011. The strategy to make it happen called for a managed approach to safety that would identify potential hazards, categorize risk levels and maintain controls. This is the basis for ZeroQuest.

In 2005, the Association proclaimed its mission to guide its members in building

the process of building a sustainable health and safety system. By becoming involved in the process through such initiatives as sharing best practices and joining working groups, individual firms will find themselves becoming contributing members of an interdependent community of companies with similar needs and qualities - all working together to achieve zero injuries.

“Although we have reached a significant milestone” adds Steve Leonard, Health And Safety Coordinator, “the vision for the ZeroQuest Program is continuous improvement and I look forward to attaining the next level as we continue to implement this program in our workplace.”

## NEW RETIREMENT HOME CONTINUED FROM PAGE 1

“We welcome this investment in our town” says Tillsonburg Mayor Stephen Molnar, “Nautical Lands Group is a reputable developer that has chosen to invest in our

“This project will help ensure that retirees have a wide variety of options within the Town.”

— Cephas Panschow  
Development Commissioner

community and I think this speaks volumes as to our attractiveness as a municipality”.

“This investment will create 100 jobs during construction and approximately 35 long term jobs in our community”.

“Our goal is to provide first-class retirement housing in communities across Ontario” says Peter Gregor, Director of Development for Nautical Lands Group, “and we look forward to our development in Tillsonburg growing as we continue to meet the needs of the community.”

“This project will help ensure that retirees have a wide variety of options within the Town” adds Development Commissioner, Cephas Panschow, “and by meeting the needs of this growing market, we can be sure that the Town will continue to grow and prosper.

Nautical Lands Group is in the final stages of design and they are planning to start construction later this year, with completion scheduled for late 2010.

Nautical Lands Group develops, owns and operates retirement residences and seniors’ housing communities across Ontario; including investments in Arnprior, Perth, and most recently, Alliston. They pride themselves on providing a quality building to meet the needs of mature adults. For more information, please visit their website at: [www.nauticalandsgroup.com](http://www.nauticalandsgroup.com).

## Industrial Building

**SALE: \$495,000**



**MLS® #:** 437755

**Price:** \$495,000

**Address:**

15 CLEARVIEW DR, TILLSONBURG

**Near:** HIGHWAY #3

**Type:**

Office(S), Industrial, Warehouse,  
Free Standing

**Property Size:**

225.8' FR X IRR. (2.65 ACRES)

**Age:** 19

**Sale/Lease:** Building & Land

15000 sq.ft. Modern industrial building on Clearview Drive. Enclosed chemical storage facility with the premises plus ample hydro, water & heat. 14,000 sq.ft. (100'x150') of industrial space along with 1,000 sq.ft. of private office space. 100'x30' concrete pad at the rear of the building designed for future expansion. See L.B. for complete details. A great opportunity.

GARY PARET, BROKER OF RECORD

BROKER OF RECORD

COLDWELL BANKER - G.R.PARET  
REALTY, BROKERAGE

(519) 688-0754

gary@paretrealty.com

**TOWN ADVISORY COMMITTEE**

CONTINUED FROM PAGE 1

health care sector. Marty was invited back to manage the construction of the new dialysis unit, a project that required him to fundraise \$1 million from the community and one that he is still proud of his involvement in.

Marty's career started with the Tillsonburg District Memorial Hospital (TDMH) in 1970 and then he worked for Health and Welfare Canada in Indian and Health Services in Northeastern Ontario for some years, returning to the Tillsonburg hospital in 1992, where he served until his retirement.

Marty has served the community in various other capacities during his career including:

- Municipal Council (eight years);
- President of the Tillsonburg Chamber of Commerce;
- Member of the Board of the Tillsonburg Community Living;
- Member of the Board for the Tillsonburg Scouting Association;
- Many regional and provincial health committees and he also represented the Ontario Hospital Association, and at times, the Ministry of Health on these committees; and
- Scout Leader, Baseball Coach, etc.

EDAC has provided input to Council on a number of items recently including the new Highway 3 Business Park, the Purchase of 54 acres on Rokeby Rd, the new Economic Development Strategy, etc. "I am pleased with the advice and guidance provided by the committee as well as their passion for our Town" says Marty, "our committee members are seasoned business leaders from the community and their success and experience serves the community well." "This, along with the support we receive from Council, has enabled us to be successful."

Marty was elected to his second term as Chair in January 2009 and is enjoying serving another two years.

He is the father of two and has two grandchildren. He enjoys being retired and spends his time, when not leading the committee, with his grandchildren, gardening, woodworking, snowmobiling and fishing with his friends. He especially enjoys sharing his gardening and snowmobiling activities with his wife of 38 years, Lynda.

The Committee Members include the below and we will be profiling them over the next few editions.

- David Corner, Chief Operating Officer, Otter Valley Foods
- Stephen Culig, Property Manager – Tillsonburg Non-Profit Housing
- Shane Curtis, President – Tillsonburg Chamber of Commerce
- Lisa Gilvesy, Partner – Jenkins & Gilvesy
- Steve Good, Vice-Chair – Good, Redden, Klosler
- Irv Horton, Member
- John Kirkland, President – Business Improvement Association
- Marty Klein, Chair
- Deanna Laemers, Records Mgmt Coordinator, Town of Tillsonburg
- John Moylan, Member
- Stephen Molnar, Mayor – Town of Tillsonburg
- Dave Morris, CAO – Town of Tillsonburg
- Barbara Morgan - Tillsonburg Real Estate Board
- Cephias Panschow, Development Commissioner – Town of Tillsonburg
- Ron Puype, President – PK Construction
- Henry Spanjers, General Manager – Marwood Metal Fabrication

*The Town of Tillsonburg is a growing town of 15,400 persons that serves a regional population of 118,000 persons within a 20 minute drive. Our workforce is available, skilled and has a strong rural work ethic that is rooted in the area's long agricultural tradition. Tillsonburg is strategically located in the centre of Ontario's agriculture and manufacturing heartland and with easy access to Highway 401, Canada's Trade Corridor. The Town is home to a diverse group of businesses that offer a wide variety of skills and services to meet your needs. Best of all, our town offers some of the lowest prices for industrial land in Ontario, NO industrial development charges, low property taxes and lower labour costs.*